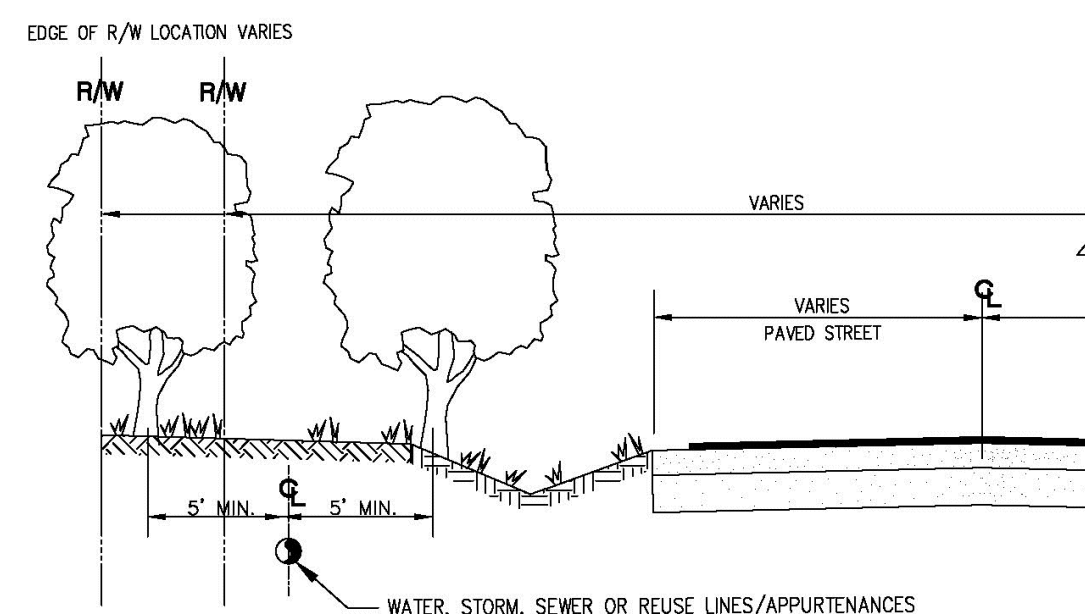


TYPICAL SCREEN FOR UTILITIES

NOTES

PLEASE NOTE THAT AS PER CITY ORDINANCE(S) 50.02(A) (4) AND 100.35(E), STREET TREES SHALL NOT BE PLACED ON TOP OF OR 5' OF EITHER SIDE OF ANY CITY OWNED UTILITY INFRASTRUCTURE. ALSO, PLEASE NOTE THAT NO TREES SHRUBBERY OR OBSTRUCTION SHALL BE PLACED WITHIN A 3' RADIUS OF A CITY OWNED LATERAL CLEANOUT OR WATER & OR REUSE METER

ENGINEERING STANDARDS 2025			
REVISIONS		ENGINEERING DIVISION CITY OF POMPANO BEACH	TYPICAL SCREEN FOR UTILITIES
BY	DATE		
TCW	APRIL 2010		
SCALE: N.T.S.		APPROVED BY:	DATE: MAY 2022 DWG. NO. 315-1

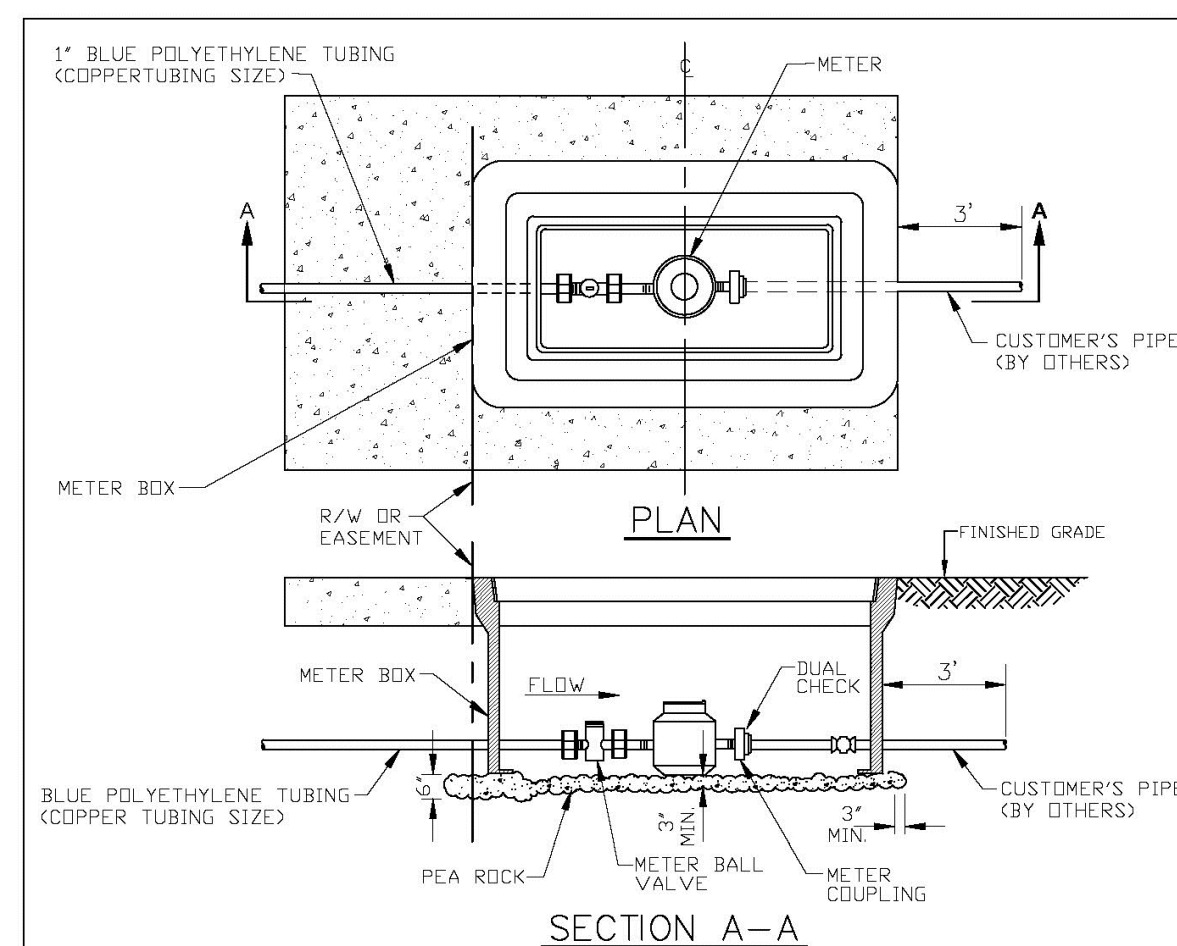


TREE LOCATIONS REQUIRED IN PUBLIC R/W ON UTILITY EASEMENTS

NOTES

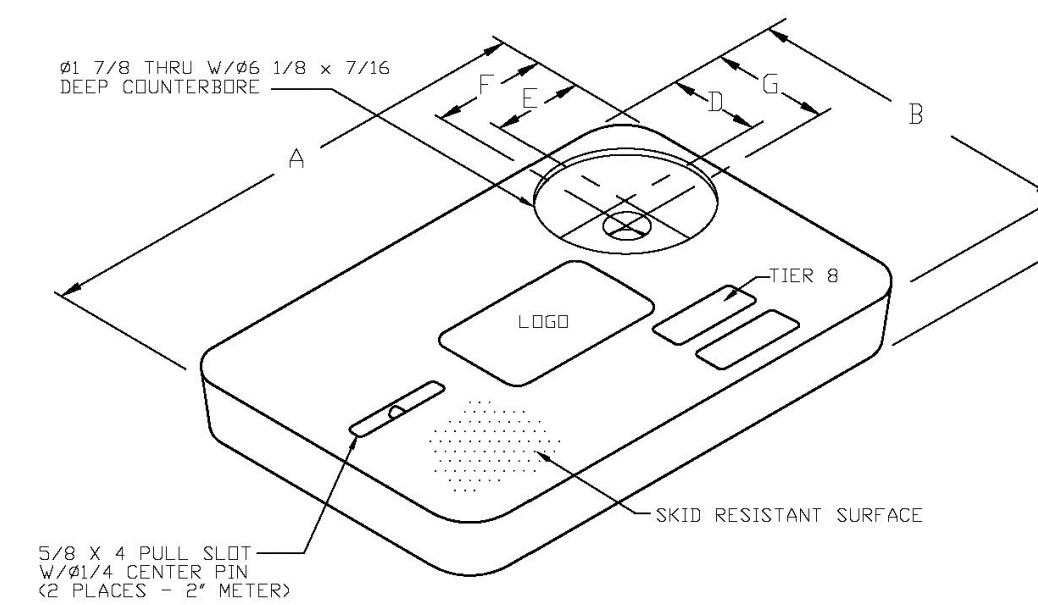
PLEASE NOTE THAT AS PER CITY ORDINANCE(S) 50.02(A) (4) AND 100.35(E), STREET TREES SHALL NOT BE PLACED ON TOP OF OR 5' OF EITHER SIDE OF ANY CITY OWNED UTILITY INFRASTRUCTURE. ALSO, PLEASE NOTE THAT NO TREES SHRUBBERY OR OBSTRUCTION SHALL BE PLACED WITHIN A 3' RADIUS OF A CITY OWNED LATERAL CLEANOUT OR WATER & OR REUSE METER.

ENGINEERING STANDARDS 2025			
REVISIONS		ENGINEERING DIVISION CITY OF POMPANO BEACH	REQUIRED TREE LOCATIONS
BY	DATE		
SCALE: N.T.S.		APPROVED BY:	DATE: MAY 2022 DWG. NO. 316-1



METER BOX INSTALLATION

ENGINEERING STANDARDS 2025			
REVISIONS		ENGINEERING DIVISION CITY OF POMPANO BEACH	METER BOX INSTALLATION FOR 5/8" AND 1" METERS
BY	DATE		
S.S.	11-2012		DATE: JAN. 2022 DWG. NO.
		SCALE: N.T.S.	105-2



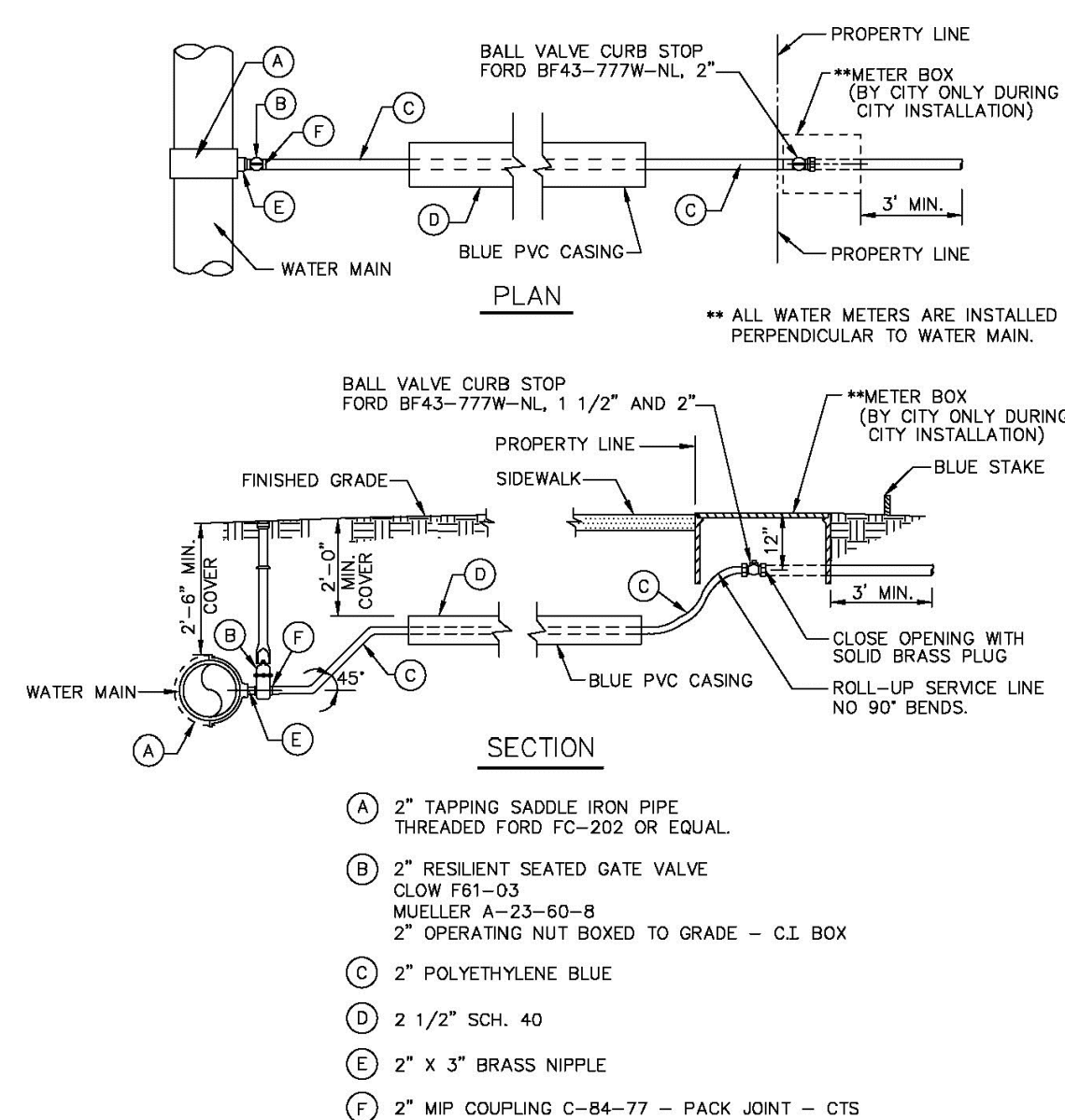
METER BOX COVER DIMENSIONS (IN)							
METER SIZE	A	B	C	D	E	F	G
1"	18 1/8"	11 1/4"	1 3/4"	3 3/4"	4"	4 9/16"	4 5/8"
1 1/2"	23 1/4"	13 3/4"	2"	4"	4"	4 9/16"	4 9/16"
2"	30 1/2"	17 1/2"	2"	4"	4"	4 9/16"	4 9/16"

NOTES

1. CUSTOMER IS CITY OF POMPANO BEACH FLORIDA
LOGO TO BE SPECIFIED: CITY OF POMPANO BEACH POTABLE WATER
2. FITS NEPTUNE R450 ANTENNA
3. THIS COVER IS RATED FOR A STATIC DESIGN LOAD OF 8,000 LBS. (35,548 N OVER A 10 (254) X 10 (254) AREA AND MUST PASS A MINIMUM STATIC TEST LOAD OF 12,000 LBS (53,376 N).
4. METER BOX COVER SHOULD BE RATED FOR TRAFFIC CONDITION AS DETERMINED BY ENGINEER OF RECORD.

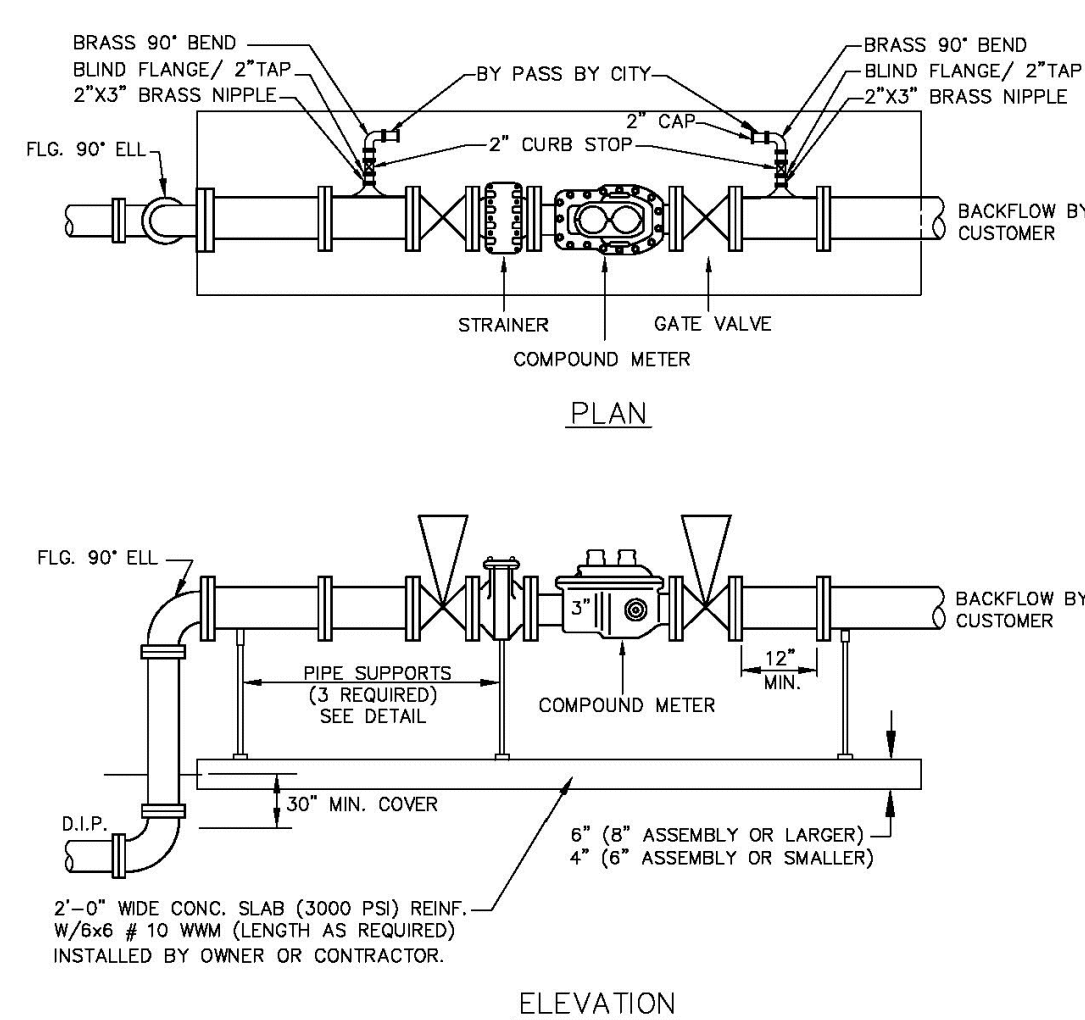
POTABLE WATER METER BOX COVER

ENGINEERING STANDARDS 2025			
REVISED		ENGINEERING DIVISION CITY OF POMPANO BEACH	TYPICAL METER BOX COVER
BY	DATE		
S.S.	11-2012		
		SCALE: N.T.S.	DATE: JAN. 2022 DWG. NO. 105-3



TYPICAL 1 1/2" AND 2" WATER SERVICE

ENGINEERING STANDARDS 2025				
REVISIONS		ENGINEERING DIVISION CITY OF POMPANO BEACH	TYPICAL 2' WATER SERVICE	
BY	DATE			DATE: APRIL 2022 DWG. NO. 107-2
S.S.	05-2011			
S.S.	05-2012			
S.S.	11-2018			
A.S.	08-2021			
SCALE: N.T.S.				

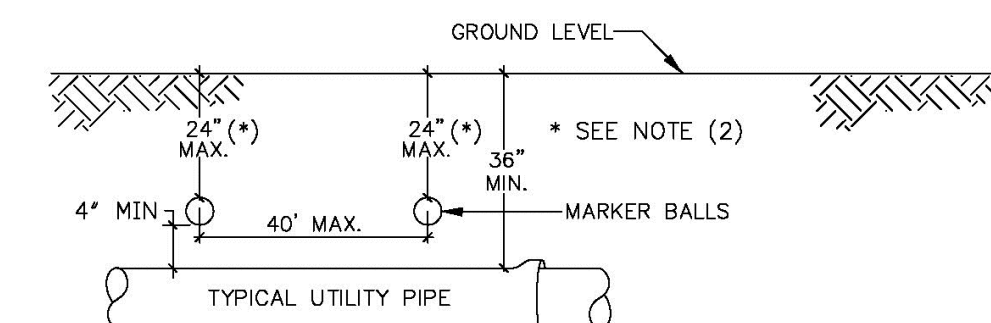


DOMESTIC SERVICE ONLY

PLEASE SEE METER INSTALL DIMENSION LIST ON STANDARD NO. 106-4

USE MEGALUGS AT ALL PIPE JOINTS

ENGINEERING STANDARDS 2025			
REVISIONS BY DATE TCW 04-08 S.S. 01-2012 S.S. 11-2012		ENGINEERING DIVISION CITY OF POMPANO BEACH	
		DOMESTIC SERVICE ONLY DATE: APRIL 2022 DWG. NO. 112-1	
		SCALE: N.T.S.	



GENERAL NOTES:

1. ALL UTILITY PIPE SHALL BE INSTALLED WITH 4"Ø MARKING BALLS PLACED EVERY 40' AND AT EVERY FITTING, FOR IDENTIFICATION AND WARNING PURPOSES, BURIED ABOVE THE PIPE AT A MAXIMUM DEPTH OF 24 INCHES OR AS APPROVED BY THE OWNER. IT SHALL BE COLOR CODED AND WORDED AS FOLLOWS:

POTABLE WATER.
A. COLOR: BLUE PER 62-555.320(21)(b)(3) F.A.C.

- B. LETTERING: WATER
C. FREQUENCY OF MARKER BALLS SHALL BE 145.7 Khz.
D. THE MARKER BALLS CAN BE BURIED IN ANY ORIENTATION.

THE MARKER BALLS SHALL BE DETECTABLE BY STANDARD METAL DETECTION EQUIPMENT AND SHALL BE MANUFACTURED BY TEMPO OR 3M LOCATOR SYSTEM OR EQUIVALENT (FREQUENCY 145.7 Khz)

2. FOR LARGE DIAMETER PIPE INSTALLED AT DEPTHS BELOW 4'-0" MARKER BALLS SHALL BE PLACED AT A MAXIMUM DEPTH OF 4'-0" BELOW GRADE *.

WATER PIPE IDENTIFICATION

ENGINEERING STANDARDS 2025			
REVISIONS		ENGINEERING DIVISION CITY OF POMPANO BEACH	WATER PIPE IDENTIFICATION
BY	DATE		
S.S.	01/12		
S.S.	06/16		
SCALE: N.T.S.			DATE: JAN. 2022 DWG. NO. 119-1